

**2002 Volvo VHD Tandem Dump Truck**

Cummins ISMV 320 hp., 46,055 act. mi., Allison AT, 20,000# front axle, 40,000# rear axle, axle & wheel lockers, 80-100% tires, htd. mirrors, Henderson stainless steel dump bed, belly blade, plow hook up, 50 gal. chloride tank, rear hyd. **\$52,000**

ABC TRUCK AND EQUIPMENT • BLUFFTON, IN
260-433-5858 • JTROXEL@ADAMSWELLS.COM

**2006 GMC Savana 3500**

1-ton dually, Duramax diesel, 67,000 mi., AT, AC, 11' covered utility KUV knapheide bed, Rebuilt title. **\$14,500**

ABC TRUCK AND EQUIPMENT • BLUFFTON, IN
260-433-5858 • JTROXEL@ADAMSWELLS.COM

**2003 International 7400**

(in service date 1/2005) DT530 eng., Allison 6 sp., TS, CC, AC, new front tires, exc. rear tires, air ride cab, front mount PTO pump, 20 yd. Heil Rapid Rail w/Python arm and 3 position camera system, super nice truck! **A steal at \$39,900!**

NASHVILLE, TN • 615-200-4265
CAPITALCITYTRUCK@COMCAST.NET

**2006 Freightliner M2**

6.4L 230 hp. Mercedes eng., Allison 3500 RDS 5 sp. AT, 8,000# front, 17,000# rear, 25,500# total GVW, AM/FM stereo, AC, CC, 2 tool boxes, dual alum. fuel tanks, 11 yard Neway packer w/kickbar for small dumpsters, former municipal parks truck, well maintained. . . **Only \$55,900**

NASHVILLE, TN • 615-200-4265
CAPITALCITYTRUCK@COMCAST.NET

**2010 Ford Transit Connect XLT**

2.0L 4 cyl. Ecotech eng., AT, PW, PM, PL, TS, AM/FM/CD stereo, gray cloth int., good tires, shelving/bins, rubber cargo mat, ladder rack, fleet maintained, runs/drives great. **Only \$11,900**

NASHVILLE, TN • 615-200-4265
CAPITALCITYTRUCK@COMCAST.NET

**(2) 2008 Sterlings**

185 hp. turbo Mitsubishi diesel eng., AT, PW, PDL, TS, CC, AC, AM/FM stereo, exc. tires, rear cam., 8 yd, Neway Diamondback packer, only 47,000 / 50,000 act. mi., great for recycling, city parks pick up or backdoor residential stops, immaculate, must see and drive! . . **Only \$59,900 each!**

NASHVILLE, TN • 615-200-4265
CAPITALCITYTRUCK@COMCAST.NET



Contact **EV CHARGE SOLUTIONS** for Electric Vehicle Charging hardware, software & accessories from major manufacturers like Schneider, Chargepoint, Bosch, General Electric, Legrand & AeroVironment.

(585) 374-8827 • evCHARGEolutions.com

**2005 Ingersoll Rand XP375WIR Compressor**

375 CFM 4.5L JD diesel, MDL 4045 HF275I, 180 act. hrs., self contained, really nice **\$19,000**

ABC TRUCK AND EQUIPMENT • BLUFFTON, IN
260-433-5858 • JTROXEL@ADAMSWELLS.COM

**1995 FL / Saulsbury Pumper**

Highly maneuverable, pumps on the run, high pressure pump knocks down fire with minimal water, low mi., exc. cond., call now! **Just \$27,500**

ADIRONDACK FIRE EQUIPMENT
800-635-4552 • WWW.ADIRONDACKFIRE.COM

**2005 Sterling L7500 3126 Cat**

Allison AT, AM/FM stereo, 160,000 mi., equipped w/ a Petersen Lightning Loader model TL3 and 25 yard dump bed, nice, solid, clean truck. **\$46,500**

NASHVILLE, TN • 615-200-4265
CAPITALCITYTRUCK@COMCAST.NET

**2007 International 4300**

DT466 eng., Allison trans., AM/FM stereo, AC, new front tires, 95% rear tires, only 44,000 act. mi., New Way 18 yd rear load packer w/drum winch, super sweet truck, serviced and ready to go to work! . . **\$72,500**

NASHVILLE, TN • 615-200-4265
CAPITALCITYTRUCK@COMCAST.NET

**2011 International 7400**

Maxforce 9 DT 570 310 hp. eng., Allison 6 sp., 16,000# front / 40,000# rear axles AM/FM, AC, air ride cab, Heil Durapack 5,000, 25 yd rear load packer w/1 cart tipper and reeving cyl., 91,000 mi., 6,000 hrs. Nice truck! Inspected, ready to go to work! **\$105,900**

NASHVILLE, TN • 615-200-4265
CAPITALCITYTRUCK@COMCAST.NET

**Kubota RTV-X1100CWA Utility Vehicle**

25.8 hp. diesel., 4WD, 4 wheel independent susp., fact. cab w/heat/AC, PS, hyd. dump bed. **\$15,999 Gov. price**

CROSBY EQUIPMENT • TOLEDO, OH
419-865-8820 • WWW.CROSBY-EQUIPMENT.COM

**1982 National Foam Pumper**

Detroit 6V53T 6 cyl. diesel eng. 18,234 mi./3,037 hrs., Allison MT-643 AT, Hale QLF 1,000 125-3 pump, National foam system, 1,000 gal. composite foam only tank **Call for price**

FINLEY FIRE EQUIPMENT • MCCONNELSVILLE, OH
800-545-3280 • WWW.FINLEYFIRE.COM



1983 Seagrave

100' rear mount ladder, Detroit 8V-71N diesel eng., 26,630 mi., Allison AT, Waterous 1,250 GPM Pump, 250 gal. Water Tank. **Call for price**

FINLEY FIRE EQUIPMENT • MCCONNELSVILLE, OH
800-545-3280 • WWW.FINLEYFIRE.COM



1989 Pierce Dash Pumper

CAT 3208 diesel eng, 20,604 mi., Allison AT, top mount Waterous 1,250 GPM pump, 750 gal. water tank. **Call for price**

FINLEY FIRE EQUIPMENT • MCCONNELSVILLE, OH
800-545-3280 • WWW.FINLEYFIRE.COM



How To Get a Fair Price

Get a Fair Price For Your Department's Used Fire Truck. 1-Minute Video:
www.youtube.com/user/FiretecFireTrucks

FIRETEC USED APPARATUS SALES
800-FIRETEC (347-3832)
WWW.USEDFIRETRUCKS.COM



Move Cars with your Forklift!

The Forklift Wrecker is an attachment that allows anyone with a forklift to move cars quick and easy, no hydraulics. See it in action at forkliftwrecker.com
Made in the USA. . . **\$2,145 + freight**

PHONE: 877-593-6959

FORKLIFTWRECKER.COM



C-7 Engines

Guaranteed, very low mi. take-outs, 190-330 hp. Many other makes also in stock. **\$7,500 w/Exchange**

FRONTIER TRUCK PARTS • GRAND RAPIDS, MI
866-241-2110 • WWW.FRONTIERTRUCKPARTS.COM



2016 Volvo VHD

D13 405 hp., iShift, GalFab 22' or 24' 75,000# HD rolloff, Pioneer rack & pinion tarper, tool box, Polly fender, steerable lift axle, ready for work, several available, Stk. # VM16005 **\$177,210**

GENERAL TRUCK SALES, • MUNCIE, IN
765-289-4481 • 800-382-7717



(2) Ditch Witch 1820 Trencher

20hp Honda, 2 to choose from **\$2750 each**

ANDERSON RENT-ALL
ANDERSON, IN • 765-644-4556



1988 Ford F700 Hi Ranger

55' bucket truck, 34,000 mi., 5,900 hrs., like new condition. **\$17,500 OBO**

CALL 715-459-2172



1993 Lincoln Town Car Limo

14 passenger, great shape, 174,000 mi. **\$7,900 OBO**

CALL 715-459-2172



2014 CENTAUR DEALER DEMO

34 hp. Turbo Diesel
LOW HOURS

PHONE: 440-285-1730

LEOSARGO.COM



Simply the best Radar Speed Trailer in the business

Easier to transport – Faster to setup – More effective at slowing cars

The SpeedCheck DuraTrailer™ is simply the most effective, versatile and durable traffic-calming trailer available anywhere. So simple to transport and set up that workers will use it day in and day out. Most importantly, the DuraTrailer's patent pending design improves sign visibility, making it more effective at slowing cars and reducing accidents.

Increase WORK ZONE safety today

THE BEST IN THE BUSINESS
INFORMATION DISPLAY
COMPANY

Call (503) 972-3380 or visit www.speedchecktrailer.com

**Refinite Water Filter**

120" diameter, 4 cell/less media, horizontal pre-filter, 40' long x 10' diameter, approx. 80,000#, exc. cond., never used, O&M manual included, fact. design & set-up avail.

ROCKINGHAM COUNTY PUBLIC WORKS DEPT., VA
CONTACT BARRY HERTZLER AT 540-564-3020

**2004 Vac-Con Combo Sewer Cleaner**

Ex-municipal unit, rebuilt by certified technicians, ready to work, includes vacuum and high pressure water jet capability. **Priced under \$80,000**

WE BUY SURPLUS EQUIPMENT
FINANCING AVAILABLE

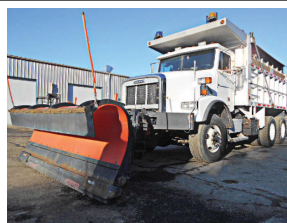
STANDARD EQUIPMENT CALL JOE 312-208-6373
WWW.STANDARDEQUIPMENT.COM

**2007 Leach 2Rill**

25 yd body, International chassis rebuilt and ready to go, price less than a third of new. Visit our website for full inventory. **Call for Price**

WE BUY SURPLUS EQUIPMENT
FINANCING AVAILABLE

STANDARD EQUIPMENT
CALL ANDY (312) 391-3089
WWW.STANDARDEQUIPMENT.COM

**(2) 2001-02 Freightliner FL-112 Plow Trucks**

Nice & clean, tight black heavy single frame rails, **Allison HD4560-P 6-sp. AUTO**, ISM Cummins, 370 hp. chippable to 400 hp., 121,000 mi., 20,000# front axle, 46,000# rear axle on Hendrickson, AC, alum. cab, A-1 cond. mechanically & cosmetically. Stk. #4569B & 4588B **... \$69,800 each**

PRAIRIE TRUCK AND AUTO SALES • DEFOREST, WI
608 842-3040 • WWW.PRAIETRUCK.COM

**2007 Elgin Pelican P**

Low hrs. / low mi., ex-municipal unit rebuilt by fact. authorized dealer, price at less than half of new. Visit our website. **Call for Price**

WE BUY SURPLUS EQUIPMENT
FINANCING AVAILABLE

STANDARD EQUIPMENT
CALL ANDY (312) 391-3089
WWW.STANDARDEQUIPMENT.COM

The **Road Groom** maintains loose material road beds faster and cheaper, with less stress on the road than a conventional road grader. With 31' of cutting blades, the **Road Groom** cuts, spreads, and fills in one easy operation, with grading speeds up to 20 mph.



800-864-4595 or 785-754-3513

www.swihart-sales.com

IMEL MOTOR SALES
MEDIUM DUTY TRUCKS

HOME OF THE CLEANEST SINGLE-AXLE TRUCKS

www.imelmotorsales.com

Check us out on the web

www.imelmotorsales.com

Call Brent
260-437-4577

Phone: (260) 565-3177

Fax: (260) 565-4177

Email: brent@imelmotorsales.com

Call for References

Check our website for financing



ASK ABOUT OUR DELIVERY SERVICE



WHY BUY NEW?
STRETCH YOUR BUDGET LIKE MANY OTHER MUNICIPALITIES HAVE!

**2009 INTERNATIONAL 4300**

Oklahoma truck, 250 hp. DT466, Allison AT, 33,000# GVW, all new snowplow pkg. w/central hyd. & stainless tail gate sanders.

\$65,000

WE OFFER
OPTIONAL 2 YEAR WARRANTY & DELIVERY

USED CHASSIS WITH ALL NEW EQUIPMENT FOR ½ THE PRICE OF A NEW TRUCK!

**(10) JUST IN 2006 GMC 7500**

Southern trucks! pre emission 7.8 Duramax inline 6 cyl. diesel, AT, hydr. brakes, under CDL, new 10' snow plow pkg., 10' dump w/heavy hoist, central controls, stainless tailgate salter sander, 10' Boss plow

\$56,800

Go To Our Website For Live Videos!