



2005 Dodge 2500 w/ 5.7L V-8 Hemi engine, AT, 4WD, A/C, AM/FM stereo, light bar and spotlight, excellent matching set of Goodyear Wrangler tires. Reading utility bed w/locking compartments, ladder racks and pintle hitch. Super nice, well maintained truck with only 88K miles... **\$15,500**

615-974-3348 • 615-200-4265

PHOTOS EMAILED BY REQUEST • CAPITALCITYTRUCK@COMCAST.NET



2013 Sand Reeper

Now taking orders for Police & Fire Reepers, street legal as L.S.V. See at Tom's Toys.

TOM'S TOYS, SPRINGFIELD, OH

WWW.TOMS TOYS.NET • 937-917-8234



2007 Sterling

7.2L Cat engine, Allison 6 speed automatic, AM/FM stereo, cold A/C, heated mirrors, cloth seats, excellent tires and 113K miles with 25 yard Heil 5000 body. Well maintained southern county truck that is in excellent condition. **Only \$82,500**

615-974-3348 • 615-200-4265

PHOTOS EMAILED BY REQUEST • CAPITALCITYTRUCK@COMCAST.NET



2007 Ford Crown Victoria

Police Interceptor Package, 62,000 mi., gray cloth. **\$6,500**

FIERGE AUTO SALES • QUINCY, IL

217-224-7044 • WWW.FIERGEAUTO.COM



1997 International Sewer Jetter Truck

DT 466 engine, Allison 5 speed A/T, 123K miles. 100% front tires and 80% rear tires. Model 800XX Sewer Jetter with work lights and strobe lights. This truck has just been serviced and is in excellent condition. **\$16,500**

615-974-3348 • 615-200-4265

PHOTOS EMAILED BY REQUEST • CAPITALCITYTRUCK@COMCAST.NET



1979 FMC

16,966 miles, 1,000 gpm 2-stage pump, Chevy C70 chassis, 427 CID engine, 3,500 watt generator. **\$10,000 OBO**

JEFF TROXEL • TOWN OF WAKARUSA

574-862-2245 • WAKARUSA, IN



1986 Pierce Arrow

Detroit Diesel 8V-92TA Engine, 28,905 Miles / 3,721 Hours, Allison Automatic Transmission, Waterous 1500 GPM Pump, 200 Gallon Steel Water Tank, LTI 100' Aerial Ladder Platform w/ Piped Waterway & Breathing Air

..... **Call for Pricing**

FINLEY FIRE EQUIPMENT CO., INC

800.545.3280 • WWW.FINLEYFIRE.COM



1995 Pierce Lance

Detroit 6V92TA Diesel Engine, 47,167 Miles / 4,362 Engine Hours, Allison Automatic Transmission, Waterous 1500 GPM Pump, 500 Gallon Poly Tank, Onan 7.5kW Diesel Generator w/ 253 Hours **Call for Pricing**

FINLEY FIRE EQUIPMENT CO., INC

800.545.3280 • WWW.FINLEYFIRE.COM



New 2013 Mack Granite Model GU433 Tandem Axle Dump

Cummins diesel, 345 hp., Allison AT, 14'x5.5' dump body, central hyd. **Call**

GENERAL TRUCK SALES OF TOLEDO

419-872-4488 • 1-800-860-5727

GENERALTRUCKSALES.COM



2007 Chevy Silverado 2500 HD

4x4, 6.0L V8, gas, AT, 59,000 mi., Knapheide utility bed **\$17,995**

RON ELBE AUTO SALES • MACOMB, IL

309-836-3523 • WWW.ELBESELLSCARS.COM



New & Used Yamaha Golf Cars

Over 200 used in stock.

TNT GOLF CAR & EQUIPMENT CO. • QUINCY, IL

217-228-2226 • WWW.TNTGOLFCAR.COM



2001 Freightliner

Vin#1FVHAE811LJ49135

Model FLD112SD 6X4 Engine ISM-305V 305HP Turbo Cummins, Allison Automatic HD-4560F Wheelbase 246, Vaccon Model V309SHA, Serial Number 05012766, 9 yard debris body, 1300 gallons of water capacity, 3 stage fan vacuum, front hose reel 600' Combination Machine. **\$105,000**

1-800-672-6010 ASK FOR ERNIE

The **Road Groom** maintains loose material road beds faster and cheaper, with less stress on the road than a conventional road grader. With 31' of cutting blades, the **Road Groom** cuts, spreads, and fills in one easy operation, with grading speeds up to 20 mph.

800-864-4595 or 785-754-3513 **www.swihart-sales.com**



2011 27' Command Center

Econoline E450, with gas engine, Onan 7kW generator, LED light pkg, galley, more! New with warranty. **\$99,000**

DODGEN INDUSTRIES

800-247-1835 • 515-332-3755

www.dodgenmobiletech.com



Demo CENTAUR / ARGO units

8x8 Turbo Diesel Loaded. Can be equipped: Fight Fires / Search Rescue / Pull Fracking Pump / Carry Portable Welder / Spraying System. Unit delivery available.

LEO'S ALL SEASON VEHICLES • 440-285-1730 • WWW.LEOSARGO.COM



FREE Fire Truck Appraisal

Make an informed decision before you sell your surplus apparatus. Get fair market value.

FIRETEC USED APPARATUS SALES
WWW.USEDFIRETRUCKS.COM
800-FIRETEC (347-3832)



1996 Ingersoll Rand SD-70D Vibratory Roller

Like new, only 900 hours . . \$29,500

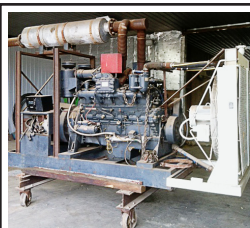
DALEVILLE AGGREGATES • DALEVILLE, IN
765-208-0551



3 Phase Distribution Panel

Plus 600 amp disconnect, with starters up to 75 hp..... \$10,000

DALEVILLE AGGREGATES • DALEVILLE, IN
765-208-0551



300 kW Gen-Set

Cummins 1710 motor with Delco gen., 1,100 hrs. \$18,500

DALEVILLE AGGREGATES • DALEVILLE, IN
765-208-0551



6" Water Pumps

75 hp. electric motors, (2) to choose from \$2500 each

DALEVILLE AGGREGATES • DALEVILLE, IN
765-208-0551



1995 Ford Ambulance Type I

McCoy Miller Box, 7.3 Diesel Engine, Automatic, 52,261 miles . . . \$10,500

WYNN APPARATUS
WWW.WYNNAPPARATUS.COM • 888-996-6277



Bradford Built Flatbeds

Powder coated steel and aluminum beds available. Sizes available for shortbeds through 11'5" bed. Starting at \$2,175

KGM EQUIPMENT SOLUTIONS • BEARDSTOWN, IL
217-323-4548 • WWW.KGMEQUIP.COM



1993 KME Engine 1500/750

Stainless steel body, poly tank, generator, seats 10 firefighters, front trash line and suction ONLY \$49,000

FENTON FIRE
1-866-FIRETRUCKS • WWW.FENTONFIRE.COM



Ford Crown Vics P71 Police Interceptors

2009 and 2010 Models. Choice of white, black/white or blue/white. Call for pricing. 10 Available.

CORBIN EQUIPMENT SALES INC., FLEMINGSBURG, KY
606-845-3055 WWW.CORBINEQUIPMENT.COM



2003 Giant Vac leaf loader

One of many leaf loaders and collectors available. Multiple manufactures/models in stock, rebuilt and ready for use. WE BUY SURPLUS EQUIPMENT!

STANDARD EQUIPMENT • WWW.STANDARDEQUIPMENT.COM • 312-706-9678



2007 Elgin Pelican Model NP

Approx 26,000 mi., 5,400 hrs., dual SB's/Limb Guards/rotating roof mounted LED lights, right side broom tilt controlled from inside of cab, sprung guide wheel, 220 gal. water capacity. WE BUY SURPLUS EQUIPMENT!

STANDARD EQUIPMENT • WWW.STANDARDEQUIPMENT.COM • 312-706-9678



Ex-Municipal Rebuilt

Sewer cleaners, street sweepers and other municipal maintenance equipment available in many price points. Equipment is rebuilt, in-stock and ready to use all at a fraction of the cost of new.

CALL JIM AT 312-829-1919 EXT 1615, OR 916-806-6224
STANDARD EQUIPMENT • VISIT OUR WEBSITE AT WWW.STANDARDEQUIPMENT.COM



2008 Whirlwind Dual

2007 Freightliner M2 chassis, 24,584 miles and 4,692 hours, Auto lube, 36" side broom tilt dual, JD 115 hp. auxiliary engine, hopper deluge, 6" hopper drain, front spray bar, in-cab dump, beacon cab/rear.

FINANCE OPTIONS AVAILABLE
STANDARD EQUIPMENT • WWW.STANDARDEQUIPMENT.COM • 312-706-9678