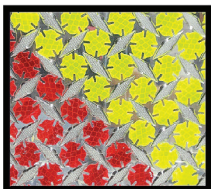


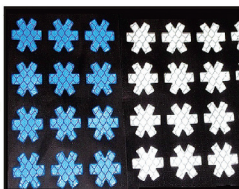


NEW 2013 Pumper Tanker
2013 Freightliner M2 106
1,500 Gpm Midship Pump
2,000 Gallon Poly Tank
Starting @ \$ 225,000.00
www.deltatankers.com
(734) 845 -4865 7 days a week
New & Used Fire Tankers



3 M Diamond Grade Reflective Chevron Striping

"Maltese Crosses"® - Fire Trucks
"Star of Life"® - Ambulances
Many colors available in both styles.



WWW.NFPA1901REFLECTIVE.COM

(734) 845 - 4865



4.5 cubic yard Ice Eliminator Brine Maker demonstrator with polyurea plastic interior coatings and painted exterior, 2700 GPH with 110 volt plug in pump with low level water light, time to clean light, semi-automated productions, 105" x60"x 78" ready for shipment.

1-800-672-6010 ASK FOR ERNIE FOR PRICING



1997 International Sewer Jetter Truck
DT 466 engine, Allison 5 speed A/T, 123K miles. 100% front tires and 80% rear tires. Model 800XX Sewer Jetter with work lights and strobe lights. This truck has just been serviced and is excellent condition. **\$20,500**

615-974-3348 • 615-200-4265

PHOTOS EMAILED BY REQUEST • CAPITALCITYTRUCK@COMCAST.NET



2005 Dodge 2500 w/ 5.7 liter V-8 Hemi engine, AT, 4WD, A/C, AM/FM stereo, light bar and spotlight, excellent matching set of Goodyear Wrangler tires. Reading utility bed w/locking compartments, ladder racks and pintle hitch. Super nice, well maintained truck with only 88K miles. . . . **\$15,500**

615-974-3348 • 615-200-4265

PHOTOS EMAILED BY REQUEST • CAPITALCITYTRUCK@COMCAST.NET



2006 Autocar WX Expeditior with ISM Cummins engine, Allison 4560 AT, AM/FM CD stereo, A/C, 100% front tires and 90% rear tires. Heil 40 yard half pack full eject body with work lights and rear strobe. Super LOW miles! Runs, drives and operates fabulous! Only **\$138,500!**

615-974-3348 • 615-200-4265

PHOTOS EMAILED BY REQUEST • CAPITALCITYTRUCK@COMCAST.NET



New 2013 Ford E-350 Mini-Bus

14 pass. Turtle Top Van Terra conversion, 5.4L V-8, AT, dual rear wheels, safer than a conventional 15 pass. van, flip up rear seats, for extra storage, great for Colleges, Airport, City Shuttle or Churches, NO CDL required, discount avail. for municipalities. We can have built to your specs.

WETZEL FORD, RICHMOND, IN CALL BRAD 765-969-2855 WWW.WETZELFLEET.COM



New Utility Trailers

76"x16', tandem axle w/gate, 15" tires and white spoke whs., elect. brakes w/break-away, 7,000# GVWR, **\$1,600**
Flat beds, dumps, equipment trailers are available.

HILL EQUIPMENT (419) 253-2991 WWW.HILLEQUIPMENT.COM



New 2013 Mobile Tech Fiber Splicing Trailer

Direct from manufacturer. 6x10 Alum. framed, Int. Height 7'. Insulated walls, AC, heat, FRP exterior, Onan 5500 generator, Fully up fitted for fiber splicing. . . . **Call for Pricing**

MOBILETECH TRAILERS MOBILETECHTRAILERS.COM (574) 892-5653



2012 Peterbuilt

Diesel Engine, Auto Trans., 500 GPM Darley PTO pump, 2000 Gal. Poly tank, 3 way dump LED Emergency Lighting . . . **\$189,900**

WYNN FIRE EQUIPMENT WWW.WYNNFIRE.COM • 800-639-4966



Trim While You Mow With Peco

Peco trimmer is perfect for highway cables, fence rows, cemeteries, etc. Attaches to mower deck. We ship anywhere. . . . **\$329.99**

SMITHCO EQUIPMENT WWW.SMITHCOEQUIPMENT.COM • 740-927-8874



Concrete Dump Trailer

Haul concrete, topsoil, sand, stone & other landscape materials. 1 cu. yd. concrete, 2-3, 500# axles, 4 wh. elect. brakes, 15" 6 ply tires, 12 volt elect. hyd. pump to operate dump system, load leveling hitch, fenders, jack, DOT lights. 1-1/2 cu. yd. dump available. Visit us on the web.

RON'S TRAILERS, INC. • WWW.RONSTAILERS.COM OREGON (TOLEDO) OH • 419-691-7667



800-864-4595 or 785-754-3513

www.swihart-sales.com



Saulsbury Rescue

HUGE 1985 Saulsbury rescue on a Pierce chassis with cascade, 20KW generator and light tower! Excellent condition.

ADIRONDACK FIRE EQUIPMENT (800) 635-4552 AFESALES@GMAIL.COM WWW.ADIRONDACKFIRE.COM



1989 Pierce Dash Pumper

Detroit 6V-92 TA Turbocharged & After Cooled Diesel Eng., 27,106 mi. / 2000 hrs., Allison AT, Alum. Alcoa Rims, Waterous CM Series 2 Stage 1500 GPM Pump, 1000 Gal. Epoxy Coated Steel Water Tank, Apparatus Length 30' / Apparatus Height 9.5', 194" WB **Call for Pricing**

FINLEY FIRE EQUIPMENT CO., INC
800.545.3280 • WWW.FINLEYFIRE.COM



2001 Pierce Encore Rescue 16' Non-Walk In

International 4900 Series 5 Man Cab, International DT530 Turbo Charged 300 hp. Diesel Eng., 13,667 Actual mi./1928.3 hrs., Allison 5 sp. AT, Air Brakes, 31' Long / 92" High, 31,000# GVW / 212" WB, AC/Heat, Onan 10kw. Diesel Generator - Elect. Start, Water Cooled, DOT Eagle Fill Pane, DOT 6000 PSI Breathing Air Bottle w/Gauges, Adapters & Controllers. **Call for Pricing**

FINLEY FIRE EQUIPMENT CO., INC
800.545.3280 • WWW.FINLEYFIRE.COM



Boxer 532DX Mini-Skid Steer

32 hp Kubota diesel, 1050 lbs. operating capacity. 2100 lbs. tip capacity, best-in-class hydraulic flow. Demo - LOW HOURS - warranty. **\$20,900**

NORD OUTDOOR POWER • BLOOMINGTON, IL
WWW.NORDPOWER.COM • 888-309-6673



FREE Fire Truck Appraisal

Make an informed decision before you sell your surplus apparatus. Get fair market value.

FIRETEC USED APPARATUS SALES
WWW.USEDFIRETRUCKS.COM
800-FIRETEC (347-3832)



1998 E-One Cyclone

1500/675/foam (E2207), Cummins diesel, auto, A/C, seats 6, 36000 miles, 25 kw gen, light tower, 1500 Hale, 675 water, 65 foam **\$112,000**

FENTON FIRE • WWW.FENTONFIRE.COM
866-310-2077 • 866-FIRETRUCKS



2006 Vactor 2110-824

Mounted on a 2006 Sterling chassis, 10 cu. yd. debris body, 80gpm @ 2,500 psi, roots 824 PD blower 3,650 cfm, 1,000 gal. water tank capacity, 19,668 mi., 876 hrs., accumulator, multi-flow, 8' telescopic boom. **WE BUY SURPLUS EQUIPMENT!**

WWW.STANDARDEQUIPMENT.COM 312-706-9678



Ex-Municipal Rebuilt

Sewer cleaners, street sweepers and other municipal maintenance equipment available in many price points. Equipment is rebuilt, in-stock and ready to use all at a fraction of the cost of new.

CALL JIM AT 312-829-1919 EXT 1615, OR 916-806-6224
STANDARD EQUIPMENT • VISIT OUR WEBSITE AT WWW.STANDARDEQUIPMENT.COM



FLEET MANAGERS Rather than buy new, REFURBISH your old injectors w/ warr.

Improve your gas mileage 10-15%, fuel injection clean, flowing & matching! We do all gasoline injectors, including boat, motorcycle, ATVs and snowmobiles.

INJECTOR EXPERTS, FOSTORIA, OH
INJECTOREXPERTS.COM • 419-619-6650



NEW & PRE-OWNED YAMAHA GOLF CARS

We also have pre-owned Club Car and EZ-Go available. We offer parts, sales and service: let us customize your golf car today.

COURIER GOLF CARS, 10041 PALM RD., GLENVIEW, IL
COURIERGOLFCARS.COM • 217-415-7739 • 217-546-4717



Kubota RTV-400

16 hp air-cooled EFI gasoline engine, CVT Plus transmission, comfortable operator area, designed for convenient transportation. Call us for best pricing!

NORD OUTDOOR POWER • BLOOMINGTON, IL
WWW.NORDPOWER.COM • 888-309-6673



2013 HINO 338 DEMO

w/ 10' s.s. dump body, diesel, auto, central hydr., call Ed for details.

GENERAL TRUCK SALES OF TOLEDO
419-872-4488
1-800-860-5727
GENERALTRUCKSALES.COM



2007 Elgin Pelican Model NP

Approx 26,000 mi., 5,400 hrs., dual SB's/Limb Guards/rotating roof mounted LED lights, right side broom tilt controlled from inside of cab, sprung guide wheel, 220 gal. water capacity. **WE BUY SURPLUS EQUIPMENT!**

WWW.STANDARDEQUIPMENT.COM 312-706-9678



2003 Giant Vac leaf loader

One of many leaf loaders and collectors available. Multiple manufactures/models in stock, rebuilt and ready for use. **WE BUY SURPLUS EQUIPMENT!**

WWW.STANDARDEQUIPMENT.COM 312-706-9678

Sell your vehicle or equipment here.

Call (800) 733-4111 to speak to a representative today.