

**1995 FL / Saulsbury Pumper**

Highly maneuverable, pumps on the run, high pressure pump knocks down fire with minimal water, low mi., exc. cond., call now! **Just \$27,500**

ADIRONDACK FIRE EQUIPMENT
800-635-4552 • WWW.ADIRONDACKFIRE.COM

**2004 Ford F-750**

C7 Cat eng., Allison AT, AM/FM stereo, AC, air brakes, exc. tires, only 44,000 mi., 12' 8 yard dump bed w/elect. tarp system & pintle hitch, exc. condition! **\$36,900**

NASHVILLE, TN • 615-200-4265
CAPITALCITYTRUCK@COMCAST.NET

**2007 International 4300**

DT466 eng., Allison trans., AM/FM stereo, AC, new front tires, 95% rear tires, only 44,000 act. mi., New Way 18 yd rear load packer w/drum winch, super sweet truck, serviced and ready to go to work! . . . **\$72,500**

NASHVILLE, TN • 615-200-4265
CAPITALCITYTRUCK@COMCAST.NET

**Kubota RTV-X1100CWA Utility Vehicle**

25.8 hp. diesel., 4WD, 4 wheel independent susp., fact. cab w/heat/AC, PS, hyd. dump bed. **\$15,999 Gov. price**

CROSBY EQUIPMENT • TOLEDO, OH
419-865-8820 • WWW.CROSBY-EQUIPMENT.COM

**1982 National Foam Pumper**

Detroit 6V53T 6 cyl. diesel eng. 18,234 mi./3,037 hrs., Allison MT-643 AT, Hale QLF 1,000 125-3 pump, National foam system, 1,000 gal. composite foam only tank **Call for price**

FINLEY FIRE EQUIPMENT • MCCONNELSVILLE, OH
800-545-3280 • WWW.FINLEYFIRE.COM

**How To Get a Fair Price**

Get a Fair Price For Your Department's Used Fire Truck. 1-Minute Video:
www.youtube.com/user/FiretecFireTrucks

FIRETEC USED APPARATUS SALES
800-FIRETEC (347-3832)
WWW.USEDFIRETRUCKS.COM

**2016 Volvo VHD**

D13 405 hp., iShift, GalFab 22' or 24' 75,000# HD rolloff, Pioneer rack & pinion tarper, tool box, Polly fender, steerable lift axle, ready for work, several available, Stk. # VM16005 **\$158,250**
plus FET (if applicable)

GENERAL TRUCK SALES, • MUNCIE, IN
765-289-4481 • 800-382-7717

**2003 International 7400**

(in service date 1/2005) DT530 eng., Allison 6 sp., TS, CC, AC, new front tires, exc. rear tires, air ride cab, front mount PTO pump, 20 yd. Heil Rapid Rail w/Python arm and 3 position camera system, super nice truck! **A steal at \$39,900!**

NASHVILLE, TN • 615-200-4265
CAPITALCITYTRUCK@COMCAST.NET

**2005 Sterling L7500 3126 Cat**

Allison AT, AM/FM stereo, 160,000 mi., equipped w/ a Petersen Lightning Loader model TL3 and 25 yard dump bed, nice, solid, clean truck. **\$46,500**

NASHVILLE, TN • 615-200-4265
CAPITALCITYTRUCK@COMCAST.NET

**(2) 2008 Sterlings**

185 hp. turbo Mitsubishi diesel eng., AT, PW, PDL, TS, CC, AC, AM/FM stereo, exc. tires, rear cam., 8 yd, Neway Diamondback packer, only 47,000 / 50,000 act. mi., great for recycling, city parks pick up or backdoor residential stops, immaculate, must see and drive! . . . **Only \$59,900 each!**

NASHVILLE, TN • 615-200-4265
CAPITALCITYTRUCK@COMCAST.NET

**2013 Ford Taurus Police Interceptor**

26,000 mi., AWD, V6 Eco Boost. **\$16,995**

FIERGE AUTO SALES • QUINCY, IL
217-224-7044 • WWW.FIERGEAUTO.COM

**1983 Seagrave**

100' rear mount ladder, Detroit 8V-71N diesel eng., 26,630 mi., Allison AT, Waterous 1,250 GPM Pump, 250 gal. Water Tank. **Call for price**

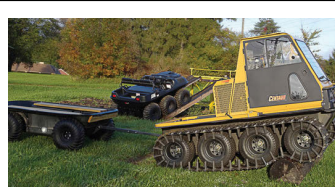
FINLEY FIRE EQUIPMENT • MCCONNELSVILLE, OH
800-545-3280 • WWW.FINLEYFIRE.COM

**Move Cars with your Forklift!**

The Forklift Wrecker is an attachment that allows anyone with a forklift to move cars quick and easy, no hydraulics. See it in action at forkliftwrecker.com Made in the USA. . . . **\$2,145 + freight**

PHONE: 877-593-6959

FORKLIFTWRECKER.COM

**2014 CENTAUR DEALER DEMO**

34 hp. Turbo Diesel
LOW HOURS . . . **MAKE OFFER**

PHONE: 440-285-1730

LEOSARGO.COM



2009 Ford Turtle Top Used Pass. Bus
6.0 diesel eng., AT, 25 pass., hyd. brakes,
89,087 mi. Stk. #175254. For more info call
Rick at ext. 1448. **\$27,000**

MIDWEST TRANSIT EQUIPMENT • KANKAKEE, IL
(888) 873-3287 • WWW.USED-BUS.COM



New 2014 MV-1 LX 5 Passenger Van
4.6L V8 gas eng., AT, 5 pass., hyd. brakes,
22 mi., 20" alum. whs., LCD touch screen.
Stk. #14-1024/176883. For more info call
Scott at ext. 1488. **\$44,500**

MIDWEST TRANSIT EQUIPMENT • KANKAKEE, IL
(800) 933-2412 • WWW.MIDWESTTRANSIT.COM



New 2015 Mobile Tech Fiber Splicing Trailer

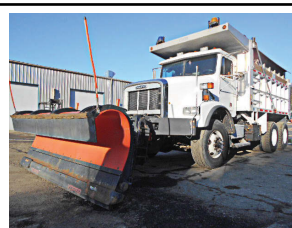
Direct from manufacturer. 6x10 Alum. framed, Int. height 7'.
insulated walls, AC, heat, FRP ext., Onan 5500 generator,
fully up-fitted for fiber splicing. **Call for Pricing**

MOBILE TECH TRAILERS
MOBILETECHTRAILERS.COM • 574-892-5653



Contact **EV CHARGE SOLUTIONS** for Electric
Vehicle Charging hardware, software &
accessories from major manufacturers like
Schneider, Chargepoint, Bosch, General
Electric, Legrand & AeroVironment.

(585) 374-8827 • evCHARGEolutions.com



(2) 2001-02 Freightliner FL-112 Plow Trucks
Nice & clean, tight black heavy single frame rails, Allison
HD4560-P 6-sp. auto. trans, ISM Cummins, 370 hp, chippable to
400 hp., 121,000 mi., 20/46 axles on Hendrickson, AC, alum. cab,
A-1 cond. mechanically & cosmetically, absolutely no rust, DOT-
ready, will separate. Stk. #4569B & 4588B. **\$69,800 each**

PRAIRIE TRUCK AND AUTO SALES • DEFOREST, WI
608 842-3040 • WWW.PRAIRIETRUCK.COM



2000 International 2554 4x2 Vactor 2110
10 cubic yard body, 80 GPM @ 2,500 PSI, dual
stage impeller. Rebuilt by a OEM trained techni-
cian. Operators and maintenance training included
in sales price. 63,156 mi. Stk. #2279

WE BUY SURPLUS EQUIPMENT
FINANCING AVAILABLE

STANDARD EQUIPMENT • CHICAGO, IL
312-706-9678 • WWW.STANDARDEQUIPMENT.COM



2008 Elgin Pelican NP

Dual tilt brooms, dual steering, John Deere
aux. eng., 6,145 hrs., 30,231 mi., water fill
hose, auto lube. Rebuilt by a OEM trained
technician. Operators and maintenance train-
ing included in sales price. Stk. #2739

WE BUY SURPLUS EQUIPMENT
FINANCING AVAILABLE

STANDARD EQUIPMENT • CHICAGO, IL
312-706-9678 • WWW.STANDARDEQUIPMENT.COM



2015 GMC Sierra 1500

4WD, reg. cab, Brand FX utility box, great
fuel economy, lt. weight, all composite box
1/3 the weight of steel, fits on 1/2 ton chassis.

\$37,500 +tax, title & plate

SUNDANCE BUICK • ST. JOHNS, MI
989-224-3900 • WWW.SUNDANCEBUICKGMC.COM



New 2014 Ford E-350 Mini-Bus

15 pass., Turtle Top Van Terra conversion, 5.4L V-8, AT,
dual rear wheels, safer than a conventional 15 pass. van,
flip-up rear seats, for extra storage, great for colleges, air-
port, city shuttle or churches, No CDL required, discounts
avail. for municipalities, we can have built to your specs.

WETZEL FORD • RICHMOND, IN
CALL BRAD 765-969-2855 • WWW.WETZELFLEET.COM

The **Road Groom**
maintains loose
material road beds
faster and cheaper,
with less stress on
the road than a con-
ventional road grader. With 31' of cutting blades,
the **Road Groom** cuts, spreads, and fills in one
easy operation, with grading speeds up to 20 mph.



800-864-4595 or 785-754-3513

www.swihart-sales.com



HONOR THE BLUE

Show your support for our men and women in Blue. Our Thin Blue
Line products are proudly made in Memphis, Tennessee.



Call for Special Government Pricing

Phone: (901) 762-0044
Toll Free: (800) 997-2232

www.FlagCenter.com
Facebook.com/TheFlagCenter